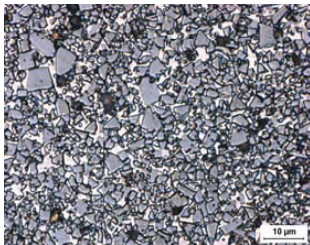
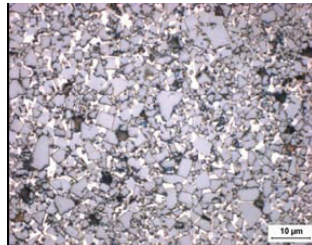




## Powder Metal Tooling (Wire EDM)



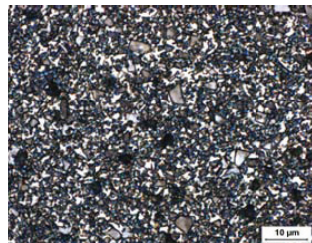
**Grade 613T**



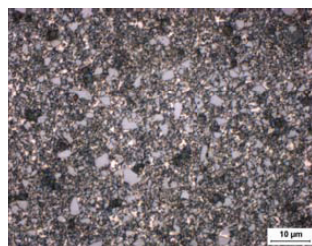
**Grade 411CT**



**Grade 313T**



**Grade 315T**



**Grade 813CT**

### Application Background

Although the grades **613T** and **411CT** were developed primarily for medium to large wire EDM dies and core pins with intricate shapes and sharp corner radii, they can be used in all powder metal dies and core pins. They are distinguished by their very high fracture toughness values. These grades can also be used in non-EDM applications where a tough chip resistant grade is required.

### Application Background

The above grades are a popular choice for powder metal dies and core pins and are used in both wire EDM and non-wire EDM applications. The unique properties of **813CT** make it an excellent choice for dies and core pins used in pressing stainless steel.

**All grades are processed in sinter-HIP furnaces to ensure the highest metallurgical quality.**

**NOTE:** The "T" designation in all grades represents the addition of tantalum carbide, which adds lubricity and resistance to galling in wear areas. Some of the above grades are also available without the addition of tantalum.

**EXPEDITED DELIVERY AVAILABLE**

