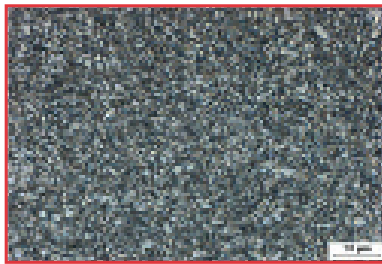


Ammunition Tooling Grades

Application Background

General Carbide is a major supplier of ammunition tooling, including bullet forming dies, necking dies, draw dies and coining punches. Along with our standard grades, General Carbide also supplies our premium grades to the ammunition industry — these provide high toughness, excellent wear and corrosion resistance, and are anti-galling.



GC-010CR

INDUSTRY CODE

C2/C9
ID Sizing Pins

STANDARD

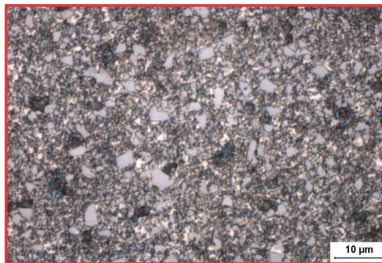
GC-106

PREMIUM

GC-0004
GC-010CR
• Extreme Wear
• Corrosion Resistant
• TaC for Lubricity

PREMIUM FRACTURE TOUGHNESS

W_K value 9



GC-813CT

INDUSTRY CODE

C10
Draw Dies

STANDARD

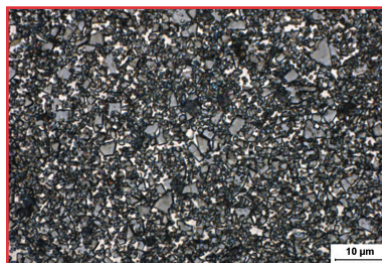
GC-209

PREMIUM

GC-813CT*
• High Wear
• Corrosion Resistant
• TaC for Lubricity

PREMIUM FRACTURE TOUGHNESS

W_K value 11



GC-313T

INDUSTRY CODE

C11
Forming Dies
Heavy Draw Dies

STANDARD

GC-211*

PREMIUM

GC-313T*
GC-411CT*
• Moderate Wear
• Corrosion Resistant
• TaC for Lubricity

PREMIUM FRACTURE TOUGHNESS

W_K value 16

W_K value 18

* WEDM GRADE

T = ADDITION OF TaC FOR LUBRICITY

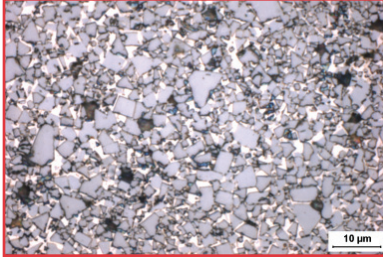
CT = GRADES ARE CORROSION RESISTANT

NOTE: The "T" designation in all grades represents the addition of tantalum carbide, which adds lubricity and resistance to galling in wear areas. Some of the above grades are also available without the addition of tantalum.

To ensure the highest metallurgical quality, General Carbide processes all grades in sinter-HIP furnaces.

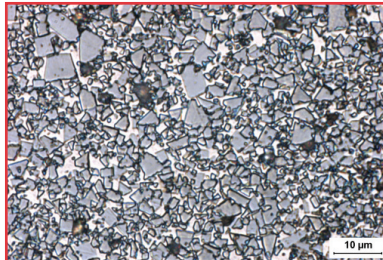
All inserts can be provided with O.D. and overall length ground to your specifications.

EXPEDITED DELIVERY AVAILABLE



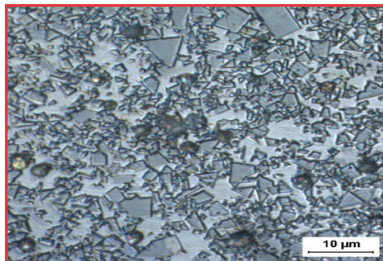
GC-411CT

INDUSTRY CODE	STANDARD	PREMIUM	PREMIUM FRACTURE TOUGHNESS
C12 <i>Forming Dies</i> <i>Heavy Draw Dies</i>	GC-313*	GC-411CT* • Moderate Wear • Corrosion Resistant • TaC for Lubricity	W_k value 18



GC-613CT

INDUSTRY CODE	STANDARD	PREMIUM	PREMIUM FRACTURE TOUGHNESS
C13 <i>Forming Dies</i> <i>"Bullet" Dies</i>	GC-315*	GC-613CT* GC-415CT* • Moderate Impact • Moderate Wear • Corrosion Resistant • TaC for Lubricity	W_k value 23 W_k value 21



GC-425CT

INDUSTRY CODE	STANDARD	PREMIUM	PREMIUM FRACTURE TOUGHNESS
C14 <i>Heavy Impact</i> <i>"Bullet" Dies</i>	GC-320*	GC-618T* GC-425CT* • Extreme Impact • Corrosion Resistant • TaC for Lubricity	W_k value 26 W_k value >30

* WEDM GRADE

T = ADDITION OF TaC FOR LUBRICITY

CT = GRADES ARE CORROSION RESISTANT

NOTE: The "T" designation in all grades represents the addition of tantalum carbide, which adds lubricity and resistance to galling in wear areas. Some of the above grades are also available without the addition of tantalum.

To ensure the highest metallurgical quality, General Carbide processes all grades in sinter-HIP furnaces.

All inserts can be provided with O.D. and overall length ground to your specifications.

EXPEDITED DELIVERY AVAILABLE